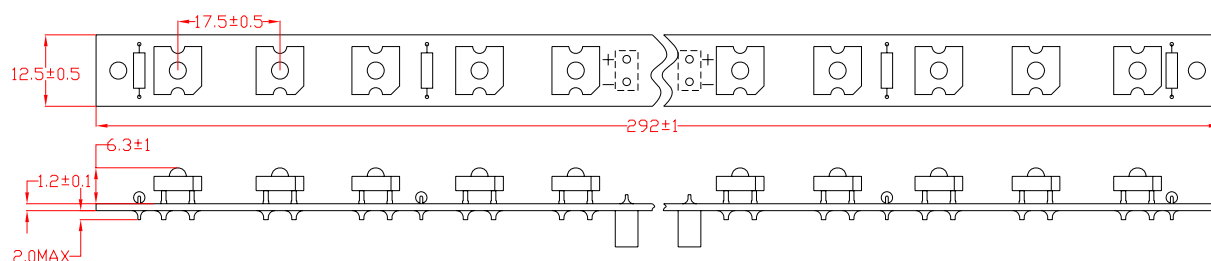


● **Features:**

1. Emitted color : Red
2. Lens Appearance : Water Clear
3. Indoor and outdoor application.
4. Low power consumption.
5. Wet and dust proof.

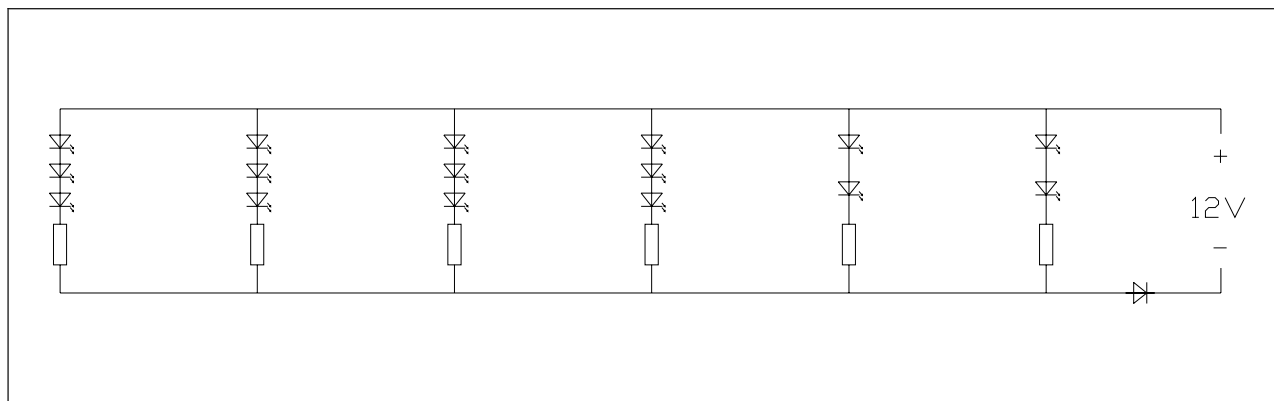
● **Package dimensions**



Notes:

1. All dimensions are in millimeters.
2. Tolerance is ± 0.3 mm unless otherwise specified.
3. Lead spacing is measured where the leads emerge from the package.
4. Specifications are subject to change without notice.

● **Circuit Diagram**



● **Applications:**

1. Customer design.



STR2-16R-40

● Absolute maximum ratings(Ta=25°C)

Parameter	Symbol	Rating	Unit
Power Dissipation	Pd	2.6	W
Vcc	Vcc	13	V
Peak Forward Current* ¹	I _{FP}	400	mA
Reverse Voltage	V _R	10	V
Operating Temperature	Topr	-25°C~60°C	
Storage Temperature	Tstg	-30°C~85°C	

*¹Condition for I_{FP} is pulse of 1/10 duty and 0.1msec width.

● Electrical and optical characteristics(Ta=25°C)

Parameter	Symbol	Condition	Min.	Typ.	Max.	Unit
Forward Current	I _F	Vcc=12V	160	180	200	mA
Luminous Intensity	I _v	Vcc=12V	35		55	lm
Reverse Current	I _R	V _R =10V	-	-	180	μA
Color Rank		Vcc=12V	519~529			nm
Viewing Angle	θ _{1/2}	Vcc=12V	35	-----	40	deg